

Reducing Industrial Sector Emissions in Pennsylvania - RISE PA -

JOSH SHAPIRO, GOVERNOR | JESSICA SHIRLEY, ACTING SECRETARY

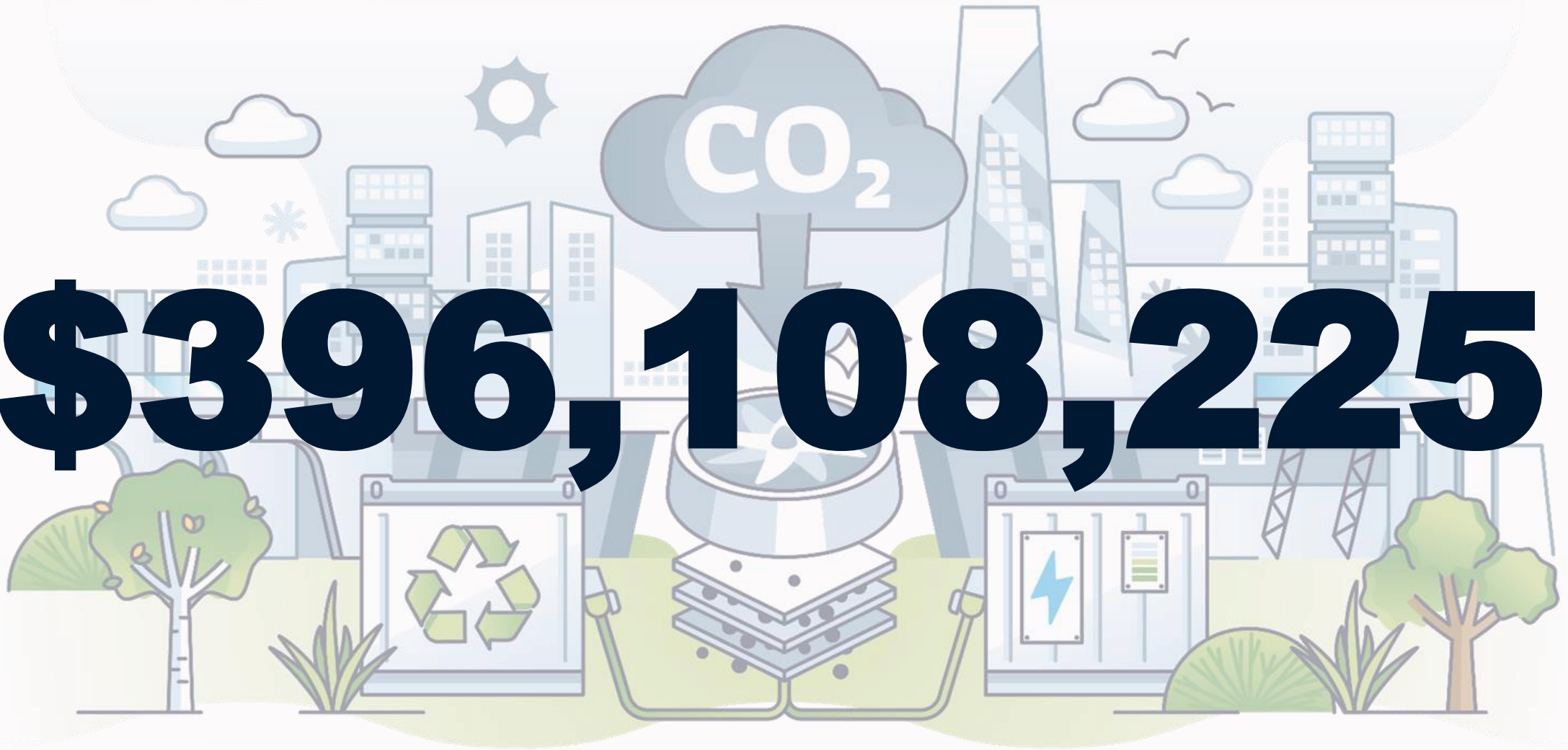


Pennsylvania
Department of
Environmental Protection



Pennsylvania
Department of
Environmental Protection

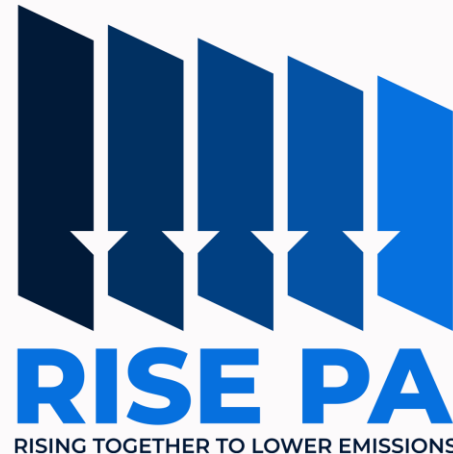
\$396,108,225



Greenhouse Gas Emissions Reduction Projects

Emissions sources

- Industrial fossil fuel combustion
- Industrial process emissions
- On-site electricity usage
- Natural gas & oil systems
- Coal mining



Eligible applicants

- Manufacturers
- Industrial facilities
- Coal mine owners/operators
- Natural gas & oil systems owners/operators



Pennsylvania
Department of
Environmental Protection

Eligible Projects



Project Types

- Energy efficiency
- Electrification
- Process emissions reduction
- Low-carbon fuels
- On-site renewable energy
- Carbon capture utilization and storage
- Fugitive emissions reductions
- Other technology



Pennsylvania
Department of
Environmental Protection

Award Tracks

A stylized illustration of a city scene. In the foreground, a person is pushing a stroller. In the background, there are buildings, a smartphone displaying a map with green areas, and a person walking. A thumbs-up icon is also visible.

Small-scale

- Industrial manufacturing facility
- 500 or fewer employees
- Administered by PennTAP

Medium-scale

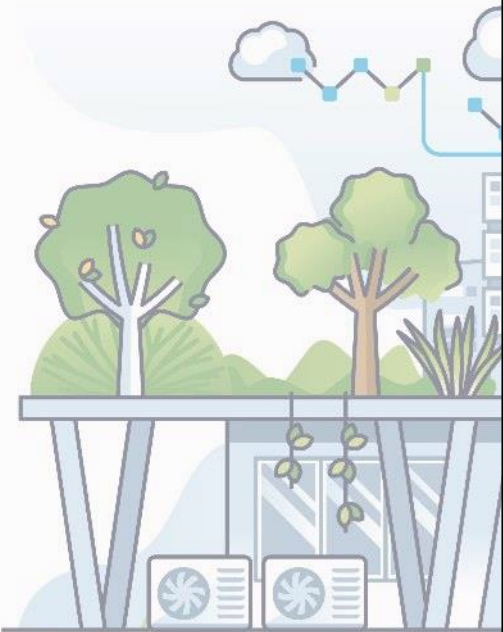
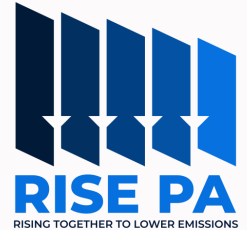
- 20% facility-wide GHG emissions reduction
- Administered by DEP

Large-scale



Pennsylvania
Department of
Environmental Protection

Award Structure

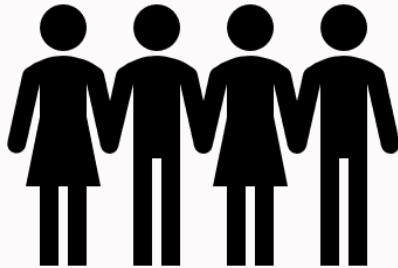


Award Track	Total Available Funding	Base Grant Award Percentage (% of Total Project Cost)	Anticipated Minimum Single Base Grant Award (DEP Share)	Anticipated Maximum Single Base Grant Award (DEP Share) ²
Small-scale (SAT)	\$40,000,000	50%	\$25,000	\$74,999
			\$75,000	\$149,999
			\$150,000	\$500,000
Medium-scale (MAT)	\$100,000,000	30%	\$300,000	\$20,000,000
Large-scale (LAT)	\$220,000,000	30%	\$20,000,001	\$110,000,000
Total	\$360,000,000			



Pennsylvania
Department of
Environmental Protection

Bonus Awards



**Community
Benefits Bonus**



**Fair Labor
Bonus**



**GHG Reduction
Bonus**



Pennsylvania
Department of
Environmental Protection

Community Benefits Bonus

Community Benefits Plan

- Define a Community Beneficiary
- Community Beneficiary informs plan development
- Provide community partnership documentation
- Commitment to develop Community Benefits Agreement (Large-scale projects only)





Pennsylvania
Department of
Environmental Protection

Fair Labor Bonus



Three Components

1. Good Neighbor Agreement
2. Collective Bargaining Commitments
3. Commonwealth Workforce Transformation Program

Small projects: Complete 1, 2, or 3

Medium-scale: Complete 2 of 3

Large-scale: Complete all 3



Pennsylvania
Department of
Environmental Protection

GHG Emissions Reduction Bonus

GHG Emissions Reduction Percentage Range	Percentage of Total Project Cost
21-24%	2%
25-29%	4%
30-34%	6%
35-40%	8%
41% +	10%





GHG Emissions Reduction Estimate

Baseline GHG Emissions

- Report annual GHG emissions for last three calendar years
- Include all Scope 1 and 2 emissions
- Describe boundaries of the facility
- Accurately represent current operations

GHG Emissions Reduction Estimate

- Detail methods, models, and key assumptions
- Estimate annual and cumulative reductions
- Estimate annual GHG emissions reduction percentage



Pennsylvania
Department of
Environmental Protection

Measuring, Monitoring, & Verification

- Full MMV Protocol must be approved by DEP
- Protocols may be developed by third-party contractors
- A source test may be required
- Grantees must report post-project GHG and co-pollutant emissions





Pennsylvania
Department of
Environmental Protection

Evaluation Criteria



Criteria	
Project Factors	Over-all project approach
	Commercial viability
	Financial viability
	Technical feasibility
	Impact of GHG reduction measures
	Project innovation/innovative impact
	Environmental and community outputs, outcomes, and performance measures
	Benefits to Low-income and Disadvantaged Communities (LIDACs)
	Workforce and job quality
	Project capabilities
Quality Factors	Sufficiency of technical detail
	Level of understanding of the key anticipated risks (e.g. technical, financial, market, environmental, regulatory)
	Clarity and appropriateness of the roles and responsibilities of the project management
	The qualifications, relevant expertise, and time commitment of individuals on the team
	The level of clarity in the identification and definition of baseline metrics and project milestones
	Extent to which the project would contribute to meeting the objectives that 40% of the benefits of climate and clean energy investments flow to disadvantaged communities



Pennsylvania
Department of
Environmental Protection

Program Policy Factors



- Geographic diversity
- Industry/subsector diversity
- Technology type diversity
- Applicant type diversity
- Innovative technologies
- Amount of funding/number of awards
- Availability of alternative funding
- Enhances manufacturing competitiveness
- Optimizes funding
- Exhibits technical, financial, or organizational risk
- Exhibits financial/business viability
- Strong history of performance
- Job creation
- Number of CWTP Trainees
- Pursues Bonus Awards
- Replicability



Pennsylvania
Department of
Environmental Protection

Program Rollout



Reducing Industrial Sector Emissions in Pennsylvania (RISE PA)

Timeline

The Pennsylvania Department of Environmental Protection is now accepting medium- and large-scale project applications for RISE PA. The application window will remain open through **11:59 p.m. on August 29, 2025**. A second funding opportunity for the Medium- and Large-scale Award Tracks is not guaranteed, so those interested in applying are encouraged to do so by the deadline.

February 2025

*DEP begins accepting applications
for medium- and large-scale
projects*

Q2 2025

*PennTAP will begin accepting
applications for small-scale
projects*

Fall 2029

*DEP will begin application review
and award selection for medium-
and large-scale projects*



Pennsylvania
Department of
Environmental Protection

Program Resources



[RISE PA Webpage](#)

[Program Guidance Document](#)

[Medium/Large-scale Application](#)

[Example Application Answers](#)

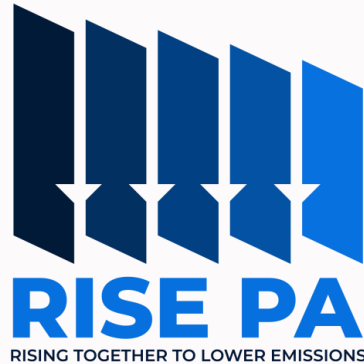
[Example Detailed Budget](#)

[Public Feedback Form](#)

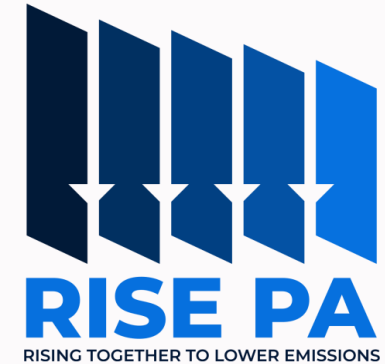


Pennsylvania
Department of
Environmental Protection

Thank You



Louie Krak
DEP Energy Programs Office
400 Market St
Harrisburg, PA, 17101



...

For questions or comments, email RA-EP-CPRG@pa.gov

The Department of Environmental Protection's mission is to protect Pennsylvania's air, land and water resources and to provide for the health and safety of its residents and visitors, consistent with the rights and duties established under the Environmental Rights Amendment (Article 1, Section 27 of the Pennsylvania Constitution).